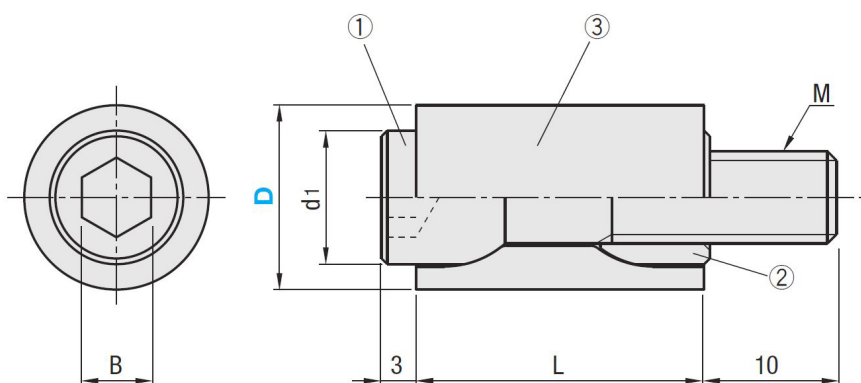


Friction Puller

PCS Company's Friction Pullers are designed to provide plate sequence control. The Friction Puller controls plate movement and utilizes friction at a particular setting to release the plate once travel limits are reached. This product can be used to systematically draw floating plates and inserts. Available sizes include: 10mm, 13mm, 16mm, and 20mm. Maximum operating temperature of 250°F or 120°C.



- ① **M** SCM435
 ② **M** S45C
 ③ **M** Special resin Temperature to be used: up to 120°C

Item Number	Description	B	D	d1	L	M (Thread)	Max Force
FP-10F	Fastener	4	N/A	7.6	N/A	M5-.8	N/A
FP-10P	Assembly	4	10	7.6	17	M5-.8	32.5 kg or 70 lbs
FP-10S	Sleeve	N/A	10	N/A	17	N/A	N/A
FP-10W	Washer	N/A	N/A	N/A	N/A	N/A	N/A
FP-13F	Fastener	5	N/A	9.6	N/A	M6-1	N/A
FP-13P	Assembly	5	N/A	9.6	20	M6-1	62.5 kg or 135 lbs
FP-13S	Sleeve	N/A	13	N/A	20	N/A	N/A
FP-13W	Washer	N/A	N/A	N/A	N/A	N/A	N/A
FP-16F	Fastener	6	N/A	11.6	N/A	M8-1.25	N/A
FP-16P	Assembly	6	16	11.6	25	M8-1.25	150.0 kg or 330 lbs
FP-16S	Sleeve		16	N/A	25	N/A	N/A
FP-16W	Washer	N/A	N/A	N/A	N/A	N/A	N/A
FP-20F	Fastener	6	N/A	14.6	N/A	M10-1.5	N/A
FP-20P	Assembly	6	20	14.6	30	M10-1.5	212.5 kg or 470 lbs
FP-20S	Sleeve	N/A	20	N/A	30	N/A	N/A
FP-20W	Washer	N/A	N/A	N/A	N/A	N/A	N/A

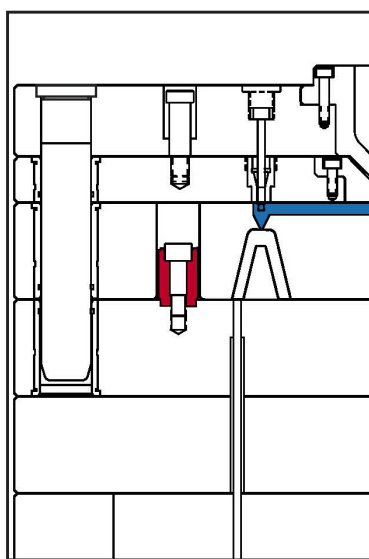
Friction Puller

Features:

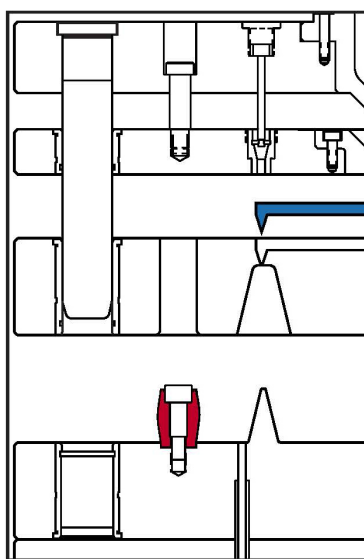
- Unit of Measure - Millimeters
- Provides smooth plate sequence control
- Systematically draw floating plates & inserts apart
- Maximum Operating Temperature of 250°F (120°C)
- Four available sizes: 10mm, 13mm, 16mm, 20mm
- For installation, tighten screw to the desired amount of friction



SPECIFICATIONS	
Bolt Material Type	SCM435
Maximum Operating Temperature	250°F (120°C)
Resin Material Type	Heat-Stabilized, Lubricated Nylon 6
Ring Material Type	S45C
Unit of Measure	Inch



Mold Closed



Mold Open

